

Lay-up Recommendations

PACOTHANE® Lamination SYSTEM

**RECOMMENDED
PRODUCTS:**

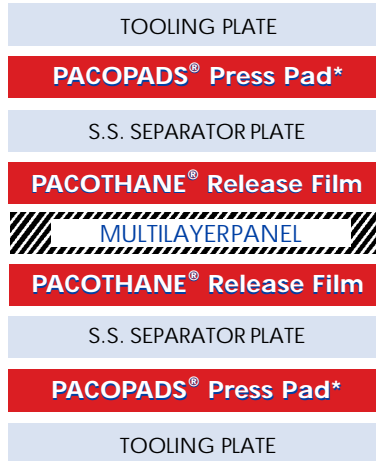
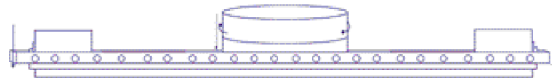


+



*PACOTHANE Release Film
Recommended Two Sides

RIGID MULTILAYER PROCESS



PACO•VIA® Resin-Blocking SYSTEM

**RECOMMENDED
PRODUCTS:**

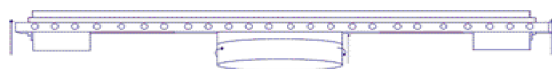
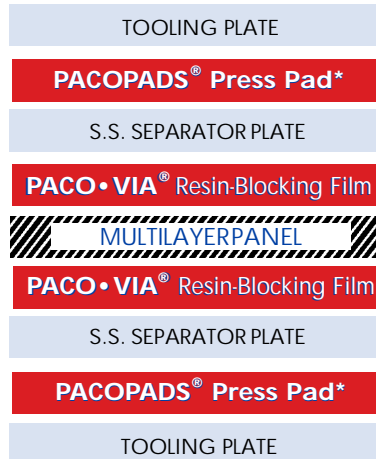


+



*PACOTHANE Release Film
Recommended Two Sides

BLIND/BURIED VIA MULTILAYER



PRODUCT INFORMATION BULLETIN

PACOPLUS® SYSTEM

RECOMMENDED PRODUCTS:



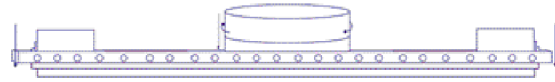
+



*PACOTHANE Release Film Recommended Against Separator Plate

Please see Flex Materials Primer for optional Lay-ups

FLEXIBLE & RIGID-FLEX CIRCUITS



TOOLING PLATE

S.S. SEPARATOR PLATE

PACOPADS® Press Pad*

PACOTHANE® Plus

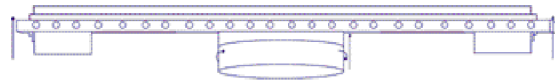
RIGID FLEX PANEL

PACOTHANE® Plus

PACOPADS® Press Pad*

S.S. SEPARATOR PLATE

TOOLING PLATE



High-Temp PACOLON® SYSTEM

RECOMMENDED PRODUCTS:

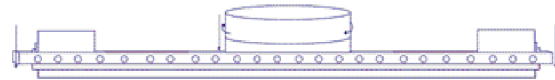


+



*PACOTHANE Release Film Recommended Two Sides

HIGH TEMPERATURE FLEXIBLE CIRCUITS



TOOLING PLATE

S.S. SEPARATOR PLATE

PACOPADS® Press Pad*

PACOLON® Release Film

MULTILAYER PANEL

PACOLON® Release Film

PACOPADS® Press Pad*

S.S. SEPARATOR PLATE

TOOLING PLATE



76 Holton Street, Woburn, MA 01801 tel: 781-729-0927 fax: 781-729-0929 www.pacothane.com

Information contained in this technical literature is believed to be accurate and is offered in good faith for the benefit of the consumer. Inasmuch as Pacothane Technologies, division of Multilayer Worldwide Enterprises LLC, has no control over the use to which others may put the material, it does not guarantee that the same results as those described herein will be obtained. Each user of the material should make his own tests to determine the material's suitability for his own particular use. Statements concerning possible or suggested uses of the materials described herein are not to be construed as constituting a license under any Multilayer Worldwide Enterprises LLC patent or application covering such use or as recommendations for use of such materials in the infringement of any patent.